

Shelter-In-Place (SIP) & Severe Weather



WHAT IS SHELTER IN PLACE & WHEN DO I SHELTER IN PLACE?

- Shelter-In-Place (SIP) is a form of short-term sheltering that may be used when the outside environment is believed to be harmful to personnel. SIP may be implemented when a suspected hazardous material (HAZMAT) incident occurs with little or no warning and evacuation is not a universally viable option. A

HAZMAT release may occur as a direct or secondary result of major accidents, natural disasters, and/or terrorist use of CBRN. SIP actions are intended to provide short-term (one- three hours) protection.

- The 19 AW/CC, or designated representative, may declare SIP for all or some portions of LRAFB, as needed.
- If shelter in place is required, this will be announced on the giant voice and from your facility managers.

WHAT ITEMS DO I USE TO SHELTER IN PLACE?

Below is a list of common items you may have in your room that will aid in sheltering:

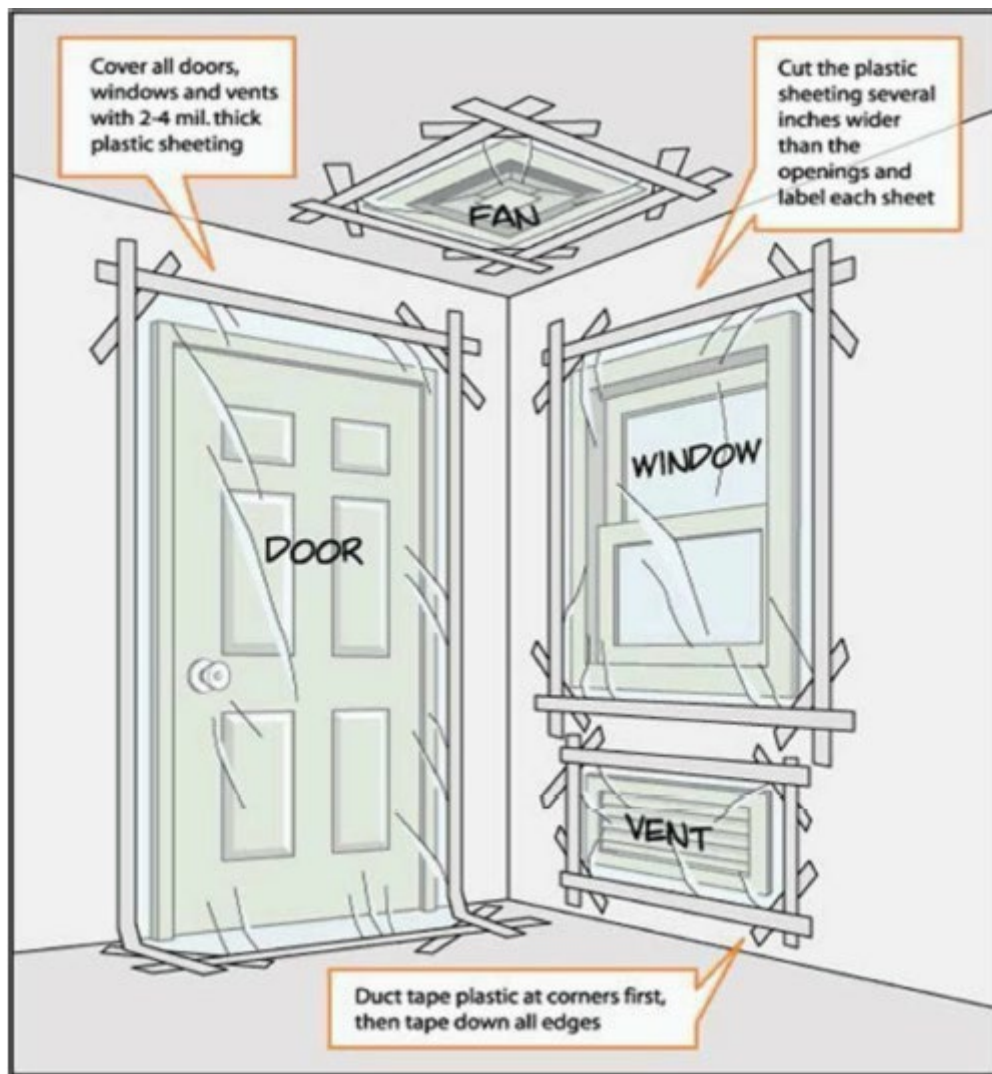
- Trash Bags/Plastic Sheeting
 - o These would be used to cover any vents, windows, or doors.
- Tape
 - o Used to hold the trash bags in place securely.
- Towels
 - o Use rolled up towels to stop the air flow under each door within your room.
- Water
 - o If you wet the towels with water first it helps better prevent contaminants from entering through the doorways.
- First Aid Kit
 - o In case any injuries occur while sheltering.
- Cell Phone/Landline

If you have any questions regarding shelter in place, please contact The Office of Emergency Management. Com: 501-987-7612

Shelter-In-Place (SIP) & Severe Weather

HOW DO I SHELTER IN PLACE?

- Step 1: You will hear the announcement over the giant voice system that will instruct you to “SHELTER-IN-PLACE”.
- Step 2: Wet your towels with water and roll them into a log shape. Then push them into the bottom seal of all of your doors, ensuring you cover the total length of the door.
- Step 3: Using the diagram below, tape all trash bags/plastic sheeting to any vents, windows, and doors.
- Step 4: Remain in the sealed room until you hear “ALL CLEAR” on the giant voice.



If you have any questions regarding shelter in place, please contact The Office of Emergency Management. Com: 501-987-7612

Shelter-In-Place (SIP) & Severe Weather

TORNADOES/SEVERE WEATHER

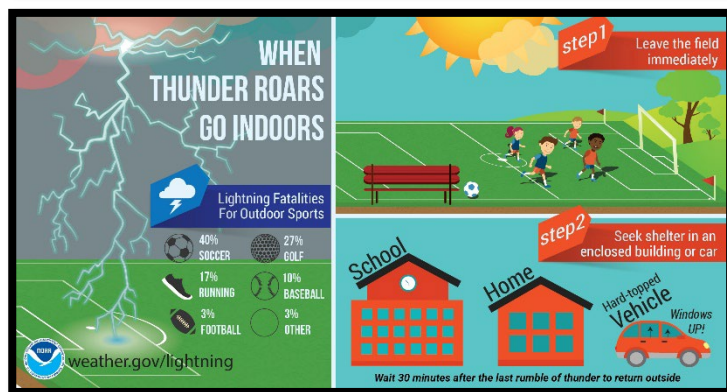
Tornado Warning System:

- **Little Rock AFB-** Siren will sound when a tornado is within 5 miles of the center of the airfield.
- **Jacksonville-** Siren will sound when a tornado is in any part of Pulaski County.

Tornado Watch vs. Tornado Warning:

- **Tornado Watch-** A tornado is possible.
 - o Stay tuned to local radio/TV for information.
 - o Know where you will shelter if you have to. (Severe Weather Rooms)
- **Tornado Warning-** A tornado is happening or imminent. Take shelter immediately.
 - o Shelter signs are posted for where to shelter in case of severe weather, so ensure you are aware of the closest severe weather area to you.

Below are some illustrations with great information regarding severe weather in the local area:



If you have any questions regarding shelter in place, please contact The Office of Emergency Management. Com: 501-987-7612